

BENEFITS

● Add a Link

File Attach allows you to add a link to multiple files and graphics to a Dynamics SL screen.

● Supported Document types

File Attach supports Excel, Microsoft Word, PDF and graphics/scanned items/images and more.

● Customization Manager

Customization manager required to view documents in Microsoft Dynamics SL.

● Easy to Use and Setup

Unlimited documents, scans or graphics for each item. Attach a note to the document as seen in the grid view so you know the purpose of the attachment. Retains the user who added it and the date added.

● Easy Access to Attached Files

Easily accessed through a button added to the SL screen.

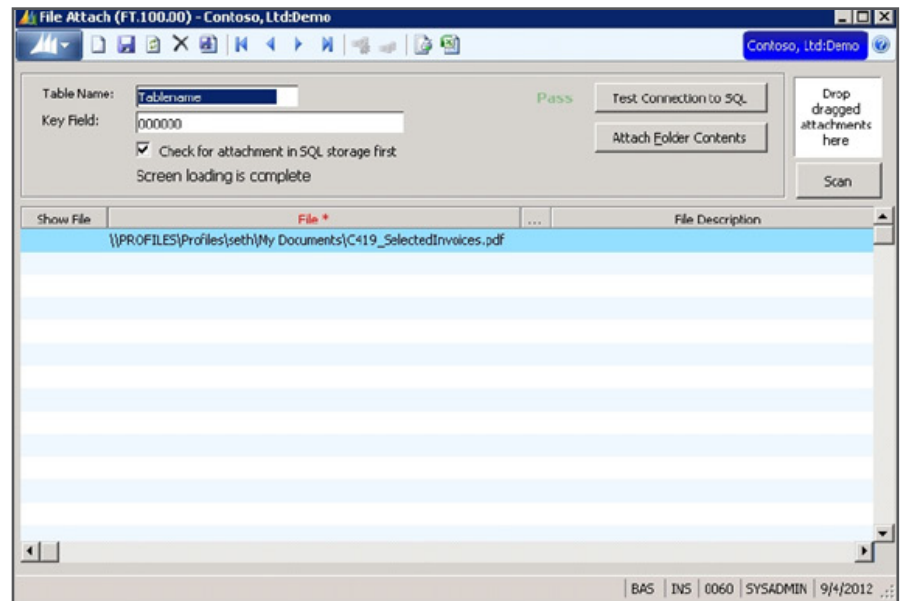
● Flexible and powerful

Attach employee pictures, tax forms, scanned invoices in AP, Inventory or Asset Pictures, Vendor quotes to purchase orders and much more...

*(Note: If additional screen customization is required contact PSS)

Improve financial management for your business by attaching scanned documents to transactions from within Dynamics SL.

File Attach allows a user to add a link to multiple files and graphics to any Microsoft Dynamics SL screen.



Newest Feature...Scan your documents directly into SL using the file attach scanning feature.

Set File Attach Types from Excel, PDF, URL, and Word.

Multiple Storage options: Choose the storage path or copy attachments to SQL Server for storage



| | |
|--|--|
| ● CUSTOMIZED SCREENS | |
| ● Accounts Payable | Voucher and Adjustment (03.010.00) Document Maintenance (03.250.00) |
| ● Accounts Receivable | Invoice and Memo (08.010.00) Payment Application (08.030.00) Payment Entry (08.050.00) |
| ● General Ledger | Journal Transactions (01.010.00) |
| ● Payroll | Time Entry (02.010.00) Time & Dollar (02.020.00) |
| ● Project Controller | Project Maintenance (PA.PRJ.00) |
| ● Time and Expense for Projects | Travel & Expense Rpt Entry (TM.ENT.00) |
| ● Requisitions | Item Request (RQ.100.00) |
| ● Purchasing | Purchase Order Maintenance (04-250.00) |
| ● Inventory | Inventory Items (10.250.00) |
| ● Bill of Material | Bill of Materials Maintenance (11.250.00) |
| ● Work Order | Work Order Entry (12.250.00) |
| ● Order Management | Sales Order Entry (40.100.00) |
| ● Contract Management | Contract Maintenance (CN.CON.00) Subcontract Maintenance (CN.SUB.00) |

